



It's Better with Kason.

Vinyl Curtains & Doors

1.800.935.2766 | kasonind.com



The Kason Mission

To Protect your Product Integrity

Our customers go to great lengths to build top-of-the-line coolers, freezers, foodservice equipment, industrial enclosures and delivery vans. Our goal is to preserve your product integrity by providing the highest quality door hardware and accessories for both original equipment and replacement applications.

End users need to protect products and processes, and lower operating costs. Their first line of defense is stable, airtight enclosures with doors that open with ease and close securely.

Since 1926, Kason has promised and delivered just that. Kason's extensive lines of walk-in and reach-in door hardware satisfy the most demanding requirements. Demonstrate the value of your products with the most innovative, dependable and longlasting hardware in the business.

Research and Testing

Every Kason product must fulfill our customers' requirements. Before we develop a new product, we research the needs of both our industry and end users. We are never satisfied with the status quo. Our dedicated research and development staff continually search for pioneering design concepts. They insist on engineering integrity, extensive product testing and precise, in-line quality control. That is how we have developed such successful and trustworthy products as SafeGuard® inside releasing safety latches, Pacesetter handles and hinges, stainless steel hinges and latches and truck door handles with removable cylinder locks.

Creative Concepts

Leading equipment manufacturers turn to Kason when they want a unique look of their own. We will adapt a stock product, design custom hardware or partner with your design engineers to develop a signature appearance just for your products. Building special and customized hardware is routine at Kason.

Quality

Kason production facilities boast state-of-the-art installations, featuring fully automated die-casting, polishing and electroplating, as well as a full range of electronically controlled and robotic machinery. We require the finest raw materials, accurate machine tolerances and the highest level of Finishing. Skilled, experienced people maintain the Kason tradition of production excellence. Our unrelenting commitment to superior manufacturing assures you consistently high quality products at the lowest possible cost. Quality assurance is integrated into every step of Kason operations to from engineering research and development through packaging and shipping.

Service

The lifeline to all your foodservice needs is our efficient and friendly Customer Service Department. A representative can quickly track product availability or the status of your order with our computerized inventory and order control system. Count on dependable global delivery as we serve you from Kason distribution centers in the continental United States and Canada as well as through authorized distributors throughout the world.

Our Promise

Satisfying your needs is our top priority. That is why Kason supplies you with hardware and accessories that reflect the same quality you demand in your own products. We strive to demonstrate an attitude that makes you want to do business with us. At Kason we offer a tradition of excellence, a philosophy of innovation and the most trusted name in specialty commercial hardware.

Kason Contacts

USA Sales & Distribution Centers

1.800.93KASON (800.935.2766)

Kason Industries, Inc.

Global Headquarters

57 Amlajack Boulevard | Newnan, GA 30265-1015, USA
800.935.3550 | FAX: 770.251.4854
Info@kasonind.com

Kason Foodservice Division

31 Amlajack Boulevard | Newnan, GA 30265-1015, USA
866.231.2157 | FAX: 770.252.8397
FoodService@kasonind.com

Kason International Division

57 Amlajack Boulevard | Newnan, GA 30265-1015, USA
770.304.3000 | FAX: 770.251.4854
International@kasonind.com

Kason Vinyl Division

31 Amlajack Boulevard | Newnan, GA 30265-1015, USA
800.472.7450 | FAX: 770.252.8397
Vinyl@kasonind.com

Kason Canada Branch

226 Industrial Pkwy North, Unit 2 | Aurora, Ontario, L4G 4C3, Canada
905.713.6515 | FAX: 905.713.6518
Canada@kasonind.com

Kason Central Branch

8889 Whitney Drive | Lewis Center, OH 43035-7106, USA
740.549.2100 | FAX: 740.549.0701
Central@kasonind.com

Kason Mid-America Branch

1239 Atlantic Avenue | Kansas City, MO 64116-4141, USA
816.472.7450 | FAX: 816.472.8580
MidAmerica@kasonind.com

Kason Western Branch

1500 East Wooley Road, Suite E
Oxnard, CA 93030-7385, USA
805.247.1088 | FAX: 805.247.1164
Western@kasonind.com

Catalog Icons

 WI	Walk-In	 CL	Casters & Caster Legs
 VI	Vinyl	 PL	Plumbing
 SD	Sliding Doors	 C&C	Cabinet & Cafeteria
 L&E	Lighting & Electrical	 CH	Canopy Hood
 RI	Reach-In	 FAB	Fabrication Supplies
 EL	Equipment Legs	 TB	Truck Body

Easimount® II Vinyl Strip Curtain System..... 117

Easimount® Point of Sale Display 120

Easimount® Vinyl Strip Curtain System..... 116

Heavy-Duty Vinyl Swing Door Hinge Mounting Kit..... 119

Maximount® Vinyl Strip Curtain System..... 117

Ordering Guide 122

Thermal Flex® Double Panel Swing Doors 118

Thermal Flex® Single Panel Swing Door..... 118

Top and Side Mount Heavy-Duty Hinges 119

Universal Heavy-Duty Vinyl Strip Curtain 117

Vinyl Curtain Materials..... 121

Vinyl Swing Door Retrofit Through-Bolt Kits..... 119

Vinyl Traffic Door Systems 114

Vinyl Traffic Door Systems 115



Protect Your Product Integrity

Protect your product integrity with the most innovative, dependable and long-lasting hardware in the business — Genuine Kason Products.

Walk-in manufacturers have made Kason the first name in quality hardware and accessories since 1926. We retain that leadership through close relationships with our customers and thorough knowledge and understanding of their requirements.

Kason hardware and accessories continually evolve to better meet the demands of the industry. If a product does not fit an application, we develop one that does. Walk-in manufacturers benefit from our incomparable knowledge and experience, because Kason products work better and last longer. Our time-tested hardware and accessories engineered specifically for walk-in requirements provide true value.

Kason products help your walk-ins accomplish what your customers demand of them.

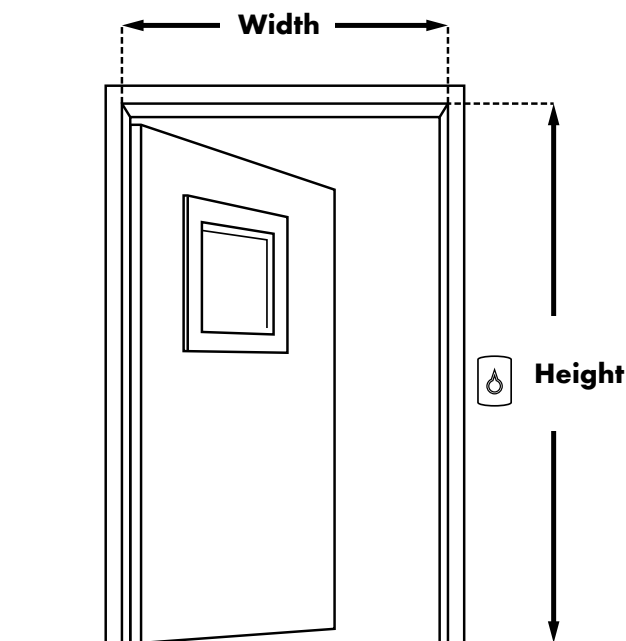
Product Lines

Hardware and Accessories for:

- Walk-In Coolers, Freezers and Test Chambers
- Reach-In Coolers, Freezers and Refrigerators
- Ovens and Heated Holding Cabinets
- Food Prep and Serving Equipment
- Cabinets and Cafeteria Equipment
- Delivery Trucks
- Panelock™ Panel Fasteners
- Doorware® Sliding Door Operating Systems
- Electrical Devices and Lighting Fixtures
- Vinyl Strip Curtains and Swing Doors
- Casters and Caster Legs
- Plumbing
- Fabrication
- Canopy/Hood

Measure Before Ordering to Ensure the Best Fit

- For Single Panel Doors, select Hand of Operation. From inside the walk-in, with the main walk-in door swinging away from you, if the main walk-in hinges are on the Left, specify Left Hand Swing Door
- Measure WIDTH from inside of door frame edges
- Measure HEIGHT from the floor to the top inside door frame edge
- Note any obstructions that may impact the installation of the vinyl curtain system so the proper mounting application can be selected, i.e. lighting, electrical, etc.



Vinyl Traffic Door Systems

Kason Vinyl Traffic Door Systems are an effective secondary barrier for a variety of applications where controlling environmental conditions is a priority. Kason offers several Vinyl Door Systems in an assortment of vinyl types to meet your specific needs.

Reduce Utilities and Save Energy

Vinyl Door Systems act as a barrier to slow both heat and cool thermal loss which ultimately lowers your utility costs and saves energy consumption.

Extend Equipment Life

Vinyl Door Systems improve the efficiency of your HVAC equipment by helping maintain proper temperatures which also reduces compressor run time. Vinyl doors help control dust which reduces filter maintenance and ultimately cuts down on the main door's wear and tear.

Separate Work Environments

Vinyl Door Systems provide one of the most cost effective ways to separate work environments. They are easy to install, inexpensive to maintain and offer great flexibility in the reconfiguring of workspaces.

Promote More Efficient and Comfortable Workspaces

Vinyl Door Systems allow better and more efficient traffic flow of personnel while maintaining the attributes of a traditional door. The ability to protect workers from undesirable elements like dust, weather, fumes, noise and more provides a more comfortable working environment.

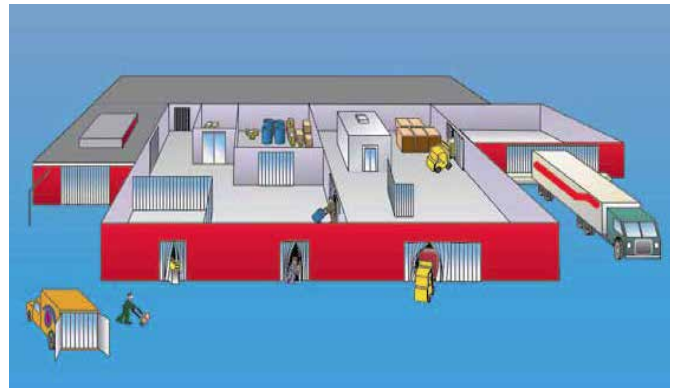


Kason offers 5 vinyl strip curtain systems to meet your specific room divider needs. From standard doorways to entire warehouse length curtains, Vinyl Strip Curtain Systems provide a range of benefits.

- Reduces energy costs by 20% or more
- Helps maintain thermal fluctuations
- Protects personnel, products and equipment from elements
- Reduces noise, dust, and contaminants
- Improves productivity by increasing personnel traffic flow
- Extends life of HVAC system
- Reduces walk-in hardware maintenance

Applications

- Walk-in Refrigeration
- Storage Enclosures
- Loading Dock Doors
- Personnel Doors
- Room Partitions
- Machine Enclosures
- Drive-thru Doors
- Food Distribution Centers
- Restaurants/Supermarkets/Convenience Stores
- Conveyor Openings
- Craneway Enclosures
- Polishing/Sanding Areas
- Electronics Enclosures
- Spray Booth Partitions
- Welding Curtains
- Laboratories
- Noise Control
- Dust Control
- Mining



- Available in pre-cut strips or bulk rolls
- 10 vinyl types
- US FDA and NSF materials available

Vinyl Curtain Applications

	Easimount®	Easimount® II	Maximount®	Heavy Duty Strip Curtains	Single Panel Swing Door	Double Panel Swing Door
Walk-In Cooler (Low Temperatures)	✓	✓	✓	✓	✓	✓
Walk-in Freezer (Freezing Temperatures)	✓	✓	✓	✓	✓	✓
Food Storage and Preparation	✓	✓	✗	✗	✓	✓
Outdoor/Environment Openings	✓	✓	✓	✓	✓	✓
Room Partitions	✓	✓	✓	✓	✓	✓
Machinery/Hardware	✗	✓	✓	✓	✓	✓
Chemical Exposure	✓	✓	✓	✓	✓	✓

Easimount® Vinyl Strip Curtain System

Mounting: Flush Wall

- Easy and fast installation
- Easy to replace strips reduces labor/maintenance costs
- Durable pre-cleated strips slide into place and help prevent tear outs
- Easy to clean clear vinyl provides high visibility
- Suitable for multiple vinyl types
- Universal design allows installation for walk-in coolers and freezers

Replacement Strips

Contact customer service at 1.800.935.2766

Specifications

Materials

Vinyl Strip Types: Multiple (See pg. 121)

Mounting Channel: Extruded aluminum

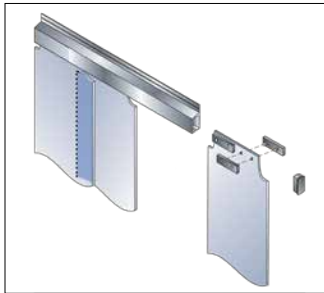
Mounting Hardware: Stainless Steel

End Caps: Polypropylene

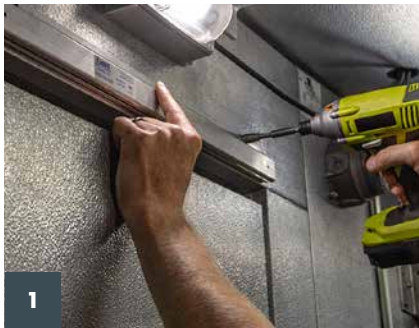
Door Opening

Standard: 38" x 84" for openings 30" – 38" wide

42" x 84" for openings 38" – 42" wide



Installation in Minutes



1 Attach mounting bar.



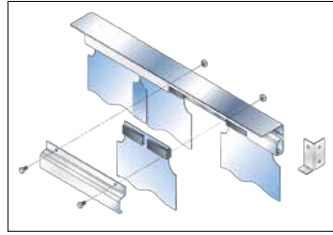
2 Slide in strips.



3 Secure strips with end caps.



Easimount® II Vinyl Strip Curtain System



"TB" Option Only



Optional door jamb or side wall mount with supplied header brackets. Specify "jamb mount" for Easimount curtains, or order "TB" for Truck Body mounting to receive these brackets and center cutout.

Mounting: Flush Wall, Door Jamb, and Overhead

- Easy and fast installation
- Durable pre-cleated strips slide into place and prevent tear outs
- Specify mounting option when ordering
- Optional mid-track strip loading reduces labor/maintenance
- Includes mounting channel
- Ceiling and door jamb mount includes notched channel with cover

Specifications

Materials

Vinyl Strip Types: Multiple (see pg. 121)

Mounting Channel: Extruded aluminum

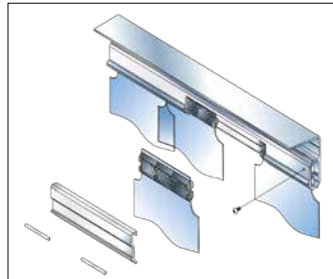
Mounting Hardware: Stainless steel

Side Wall Brackets: Zinc plated steel

Door Opening Size/Wall Width

See Ordering Guide on pg. 122

Maximount® Vinyl Strip Curtain System



Maximum duty system made of heavy gauge aluminum extrusions.

Mounting: Flush Wall, Door Jamb and Overhead

- Maximum duty system made of heavy gauge aluminum extrusions to support the load of longer and heavier vinyl curtain applications
- Easy and fast installation
- Durable pre-cleated strips slide into place and prevent tear outs
- Specify mounting option when ordering
- Optional mid-track strip loading reduces labor/maintenance

Specifications

Materials

Vinyl Strip Types: Multiple (see pg. 121)

Mounting Channel: Extruded aluminum

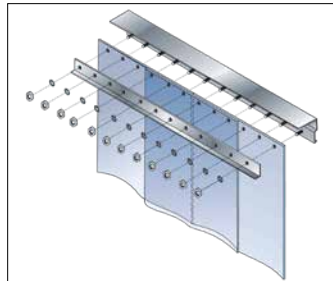
Mounting Hardware: Stainless steel

Only screw for edge strip is included

Door Opening Size/Wall Width

See Ordering Guide on pg. 122

Universal Heavy-Duty Vinyl Strip Curtain



Mounting: Flush Wall and Overhead

- Traditional heavy duty system
- Utilizes bolt-on mounting of vinyl strips
- Ideal for industrial and warehouse applications
- Suitable for multiple vinyl types

Specifications

Materials

Vinyl Strip Types: Multiple (see pg. 121)

Mounting Channel: Galvanized steel

Mounting Hardware: Zinc plated steel

Door Opening Size/Wall Width

See Ordering Guide on pg. 122

Thermal Flex® Single Panel Swing Door

Thermal Flex® Vinyl Swing Doors offer single and double panel options to meet your specific application needs. Each system uses stainless steel components engineered to perform in the toughest commercial kitchen environments.

- Will not drag across product or snag on personnel or carts
- Easy-to-clean, clear vinyl material provides high visibility
- Meets US FDA and NSF standards
- Gravity hinge closes door quickly but gently
- Exclusive adjustable cam block assures that the open door swings back to center position
- Mounting hardware included
- 10-year rust-proof hinge warranty

Replacement Panels

Contact customer service at 1.800.935.2766

Specifications

Materials

Vinyl Type: 402 smooth vinyl panel

Curtain Channel: Extruded aluminum

Hinge Brackets and Arm: Stainless steel

Mounting Hardware: Stainless steel

Door Opening Size

Maximum single panel width: 36"

See Ordering Guide on pg. 122



Thermal Flex® Double Panel Swing Doors



* Impact plates (left) and brace plates (above) are optional features available for single and double panel doors. Contact customer service for more information.



Top and Side Mount Heavy-Duty Hinges



Top mount



Side mount

- Top and side mount heavy duty hinges provide flexibility to any application that is restricted by space
- High-grade stainless steel hinges designed specifically for walk-in cooler/freezer applications
- Gravity hinge closes door quickly but gently
- Exclusive adjustable cam block assures that the open door swings back to center position, even if the door jamb is out of line.
- Top mounted hinge provides 270° swing radius
- Side mounted hinge provides 240° swing radius
- Strong, versatile hinge accommodates most door widths
- 10-year rust-proof hinge warranty

Specifications

Materials

Hinge Components: Stainless steel
Mounting Hardware: Stainless steel

Opening Size

See Ordering Guide on pg. 122



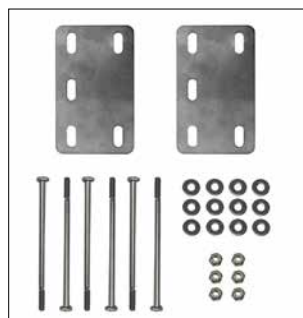
Hinge cam block adjusts with phillips head screwdriver.

Heavy-Duty Vinyl Swing Door Hinge Mounting Kit



- The Kason heavy duty hinge mounting kit allows swing door to be adapted to walk-in applications where mounting space is limited inside the doorjamb
- Stainless steel hinges designed specifically for walk-in cooler/freezer applications
- Strong extruded aluminum mounting bracket
- Zinc plated steel mounting hardware

Vinyl Swing Door Retrofit Through-Bolt Kits



- The Kason swing door retrofit kit is designed for use in walk-in applications where there is insufficient support within the walls
- Includes: mounting plates, stainless steel bolts for 4" thick walls, and stainless steel nuts and washers

Easimount® Point of Sale Display

Easimount® Vinyl Strip Curtains are the most effective way to save energy and reduce utility costs of your customer's walk-in coolers and freezers.

The Point of Sale Display Provide:

- Increased visibility and sales
- Small floorspace footprint: 11" wide x 20" deep x 60" high
- (6) Curtain sets per unit
- One curtain size per unit - see Door Opening below
- Reusable display

Features and Benefits

- Easy to install system (hardware included)
- Greatly reduces utilities and maintenance costs
- High-quality freezer-grade vinyl for use in coolers and freezers
- Strips can be trimmed to accommodate length

Specifications

Materials

Vinyl Strips:

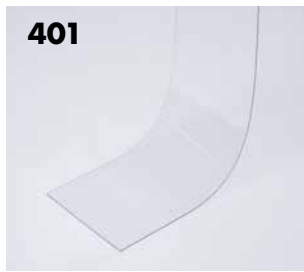
- US FDA approved freezer-grade clear vinyl
- -40 to 70°F (-40 to 21°C) (Max. temp. 82°F)
- Pre-cleated vinyl strips 6" wide x 0.06" thick (15.24 cm wide x 0.1524 cm thick)
- Mounting Channel: Extruded aluminum
- Mounting Hardware: Stainless steel
- End Caps: Polypropylene

Door Opening

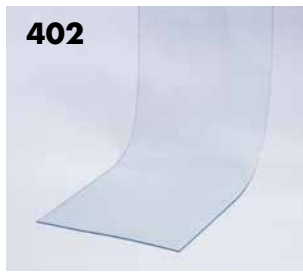
Standard: 38" x 84" for openings 30" – 38" wide
42" x 84" for openings 38" – 42" wide

Part No.	Description	Curtain Size in. (cm)
402SD6063884	(1) POS display box (6) Low-Temp Pack Sets	38 x 84 (96.5 x 213.3)
402SD6064284	(1) POS display box (6) Low-Temp Pack Sets	42 x 84 (106.6 x 213.3)
5CTN04006PKALL	(1) POS display box Curtains not included	





401



402

Kason vinyl strips are extruded from quality polyvinyl chloride compounds to ensure excellent performance and long wear. The material is non-combustible and fire-resistant.

401 Standard Smooth

Light-stable vinyl compound, 10 to 120°F (-12 to 49°C)

Applications: Indoor/Outdoor

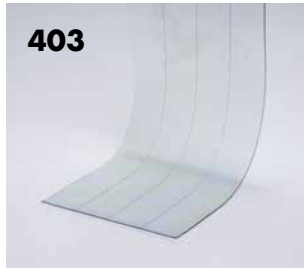
Advantages: Versatile material, does not discolor in sunlight

402 Low-Temp Smooth (FDA Approved)

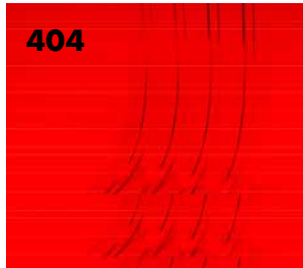
Smooth vinyl compound, -40 to 70°F (-40 to 21°C)

Applications: Indoor Coolers/Freezers

Advantages: Maintains flexibility in freezing temperatures



403



404

403 Low-Temp Reinforced (FDA Approved)

Vinyl compound with extruded nylon cord, -40 to 70°F (-40 to 21°C)

Applications: Indoor Coolers/Freezers

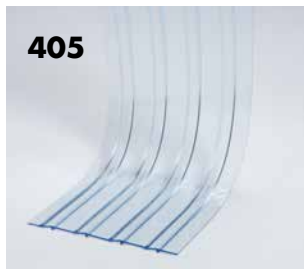
Advantages: Nylon cord extruded within vinyl increases durability

404 Standard Ribbed

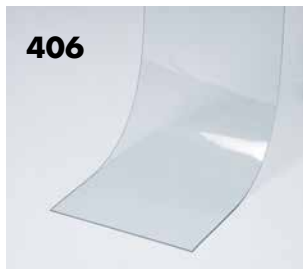
Ribbed vinyl compound, 10 to 120°F (-12 to 49°C)

Applications: Indoor/Outdoor

Advantages: Ribbing increases durability, minimizes abrasion



405



406

405 Low-Temp Ribbed (FDA Approved)

Ribbed vinyl compound, -40 to 70°F (-40 to 21°C)

Applications: Indoor Coolers/Freezers

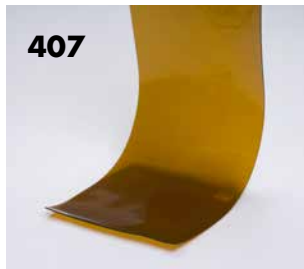
Advantages: Ribbing increases durability, minimizes abrasion

406 Anti-Static

Clear, smooth, anti-static vinyl compound, 5 to 120°F (-15 to 49°C)

Applications: Clean rooms, electronics assembly areas, etc.

Advantages: Reduces static electricity from objects/persons



407



408

407 Weld Screen

Semi-transparent dark amber smooth vinyl, 5 to 120°F (-15 to 49°C)

Applications: Welding screens, partial sight barrier

Advantages: Low-maintenance economical sight protection

408 Opaque

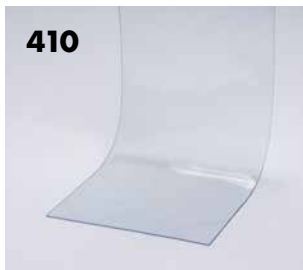
Black vinyl, 5 to 120°F (-15 to 49°C)

Applications: Where complete sight barrier is required

Advantages: Allows easy access while blocking view



409



410

409 Safety Orange

Semi-transparent, bright orange smooth vinyl, -20 to 120°F (-29 to 49°C)

Applications: Identification of door opening edge

Advantages: Signals traffic hazard and helps meet OSHA requirements

410 X-Low Temp (FDA Approved)

Smooth vinyl, -80 to 60°F (-62 to 16°C)

Applications: Indoor freezers, blast freezers

Advantages: Meets Federal food service requirements for use in extra-low temperature applications.



411



Bulk Roll Vinyl — contact 1.800.935.2766

Ordering Guide

Complete the following information for each door system and call 1.800.935.2766 to place your order.

Vinyl Strip Curtain Systems and Replacement Strips

Which Strip Curtain System do you need?

- Easimount® (pg. 116)
 Easimount® II – Ceiling Mount (pg. 117)
 Easimount® II – Side Wall Mount (pg. 117)
 Maximount® – Notched Channel w/ Cover (pg. 117)
 Maximount® – Standard Mount w/o Notch (pg. 117)
 Heavy Duty (pg. 117)
 Traditional Loop System (Not Shown)

Opening Width: _____ Height: _____
(nearest whole in/cm)

Vinyl Strip Curtain Material Type (see pg. 121): _____

Do you need Safety Orange strips: (Y/N): _____
(see pg. 121)

Vinyl Strip Gauge ___ 0.06" ___ 0.08" ___ 0.12"

Vinyl Strip Width ___ 4" ___ 6" ___ 8" ___ 12"

Application: _____

Temperature range: _____

Number of replacement strips: _____

Vinyl Swing Door Systems

Which Swing Door System do you need?

- Single Panel – Top Mount Hinge (pg. 118)
 RIGHT/LEFT side door opening: _____
 Single Panel – Side Mount Hinge (pg. 118)
 RIGHT/LEFT side door opening: _____
 Double Panel – Top Mount Hinge (pg. 118)
 Double Panel – Side Mount Hinge (pg. 118)

Right/left door opening is determined from inside of the walk-in, order Left Hand Single Panel Door if walk-in door hinges are on the left. Single panel swing doors are typically installed on the same side as the exterior door's hinges.

Opening Width _____ Height _____
(nearest whole in/cm)

Application: _____

Temperature range: _____

Optional Material

- Heavy-Duty Door Mounting Kit (pg. 119) (QTY): _____
- Retrofit Through-Bolt Kit (pg. 119) (QTY): _____
- Kick/Impact Plates (pg. 118) (Y/N): _____
- Brace Plates (pg. 118) (Y/N): _____

Vinyl Strip Curtain System Information

Part	Part ID	Mounting Types	Types	Strip Sizes/Widths
Easimount®	SA, LA	Flush Wall	401, 402, 403, 406, 407, 408, 409, 410	4", 6", 8", 12"
Easimount® II	SB, LB	Flush Wall, Overhead (SB), Side Wall/Jamb Mount (TB)	401, 402, 403, 406, 407, 408, 409, 410	
Maximount®	MM	Flush Wall, Overhead, Side Wall/Jamb Mount (specify JM)	All 400 Series (see pg. 119)	8", 12"
HD Universal	HD	Flush Wall, Overhead	All 400 Series (see pg. 119)	
Traditional Loop	SC	Flush Wall	All 400 Series (see pg. 119)	4", 6", 8"

Standard Overlap = 50% (all parts). 33% and 66% overlap available in some sizes.

Returns and Cancellation Policy

Returns must be preauthorized by Kason. Approved returns are subject to restocking fee. Custom sizes/orders are nonreturnable and may not be canceled. Kason is glad to assist you in identifying and ordering the correct Vinyl System for your application, but the buyer assumes all the suitability for application of the products of which they are purchasing.